



# RESIDENTIAL LIGHTING

Lighting solutions for residential and MDU projects

# RESIDENTIAL LIGHTING

Lighting that blends comfort, performance, & style.

Explore CSC LED's newest residential and MDU lighting solutions. From first impression to final detail, our products deliver reliable performance, modern design, and exceptional value for every project.

## TABLE OF CONTENTS

### Product Type

Cylinders	Page 3
Vanity Lighting	Page 4
Downlights	Page 5
Strips	Page 8
Emergency Lighting	Page 10



## WHY CHOOSE CSC LED?



### DISTRIBUTOR PERKS

2% online discounts, quick shipping, live inventory counts, & free shipping on orders over \$250!



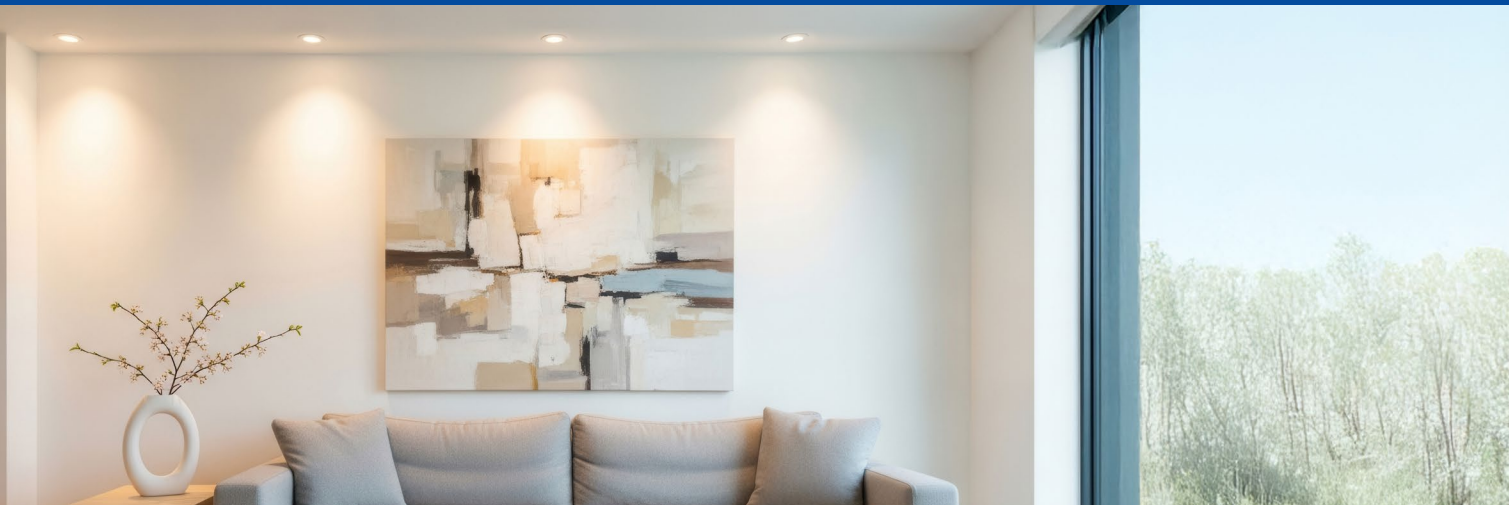
### CONTRACTOR PERKS

Contractors earn rewards on CSC LED purchases made through our partner distributors!



### FREE LIGHTING DESIGNS

Professional photometric lighting designs using IES recommendations tailored to any job!





# WCYL CYLINDERS

## 3CCT & RGBW MODELS



### KEY FEATURES

#### Power Selectable\*

7W / 10W / 15W  
10W / 20W / 30W

#### 3CCT or RGBW Selectable

3000K / 4000K / 5000K  
Red / Green / Blue / White

#### 120-347V Universal Driver

RGBW: 120-277V Driver

#### Direct or Direct/Indirect Distribution Options

100% downlight or 50%  
uplight, 50% downlight

#### Built-in Photocell\*

unplug to bypass

#### RGBW Model Features 16 Colours and 5 Operating Modes

\*Excluding 30W RGBW Model

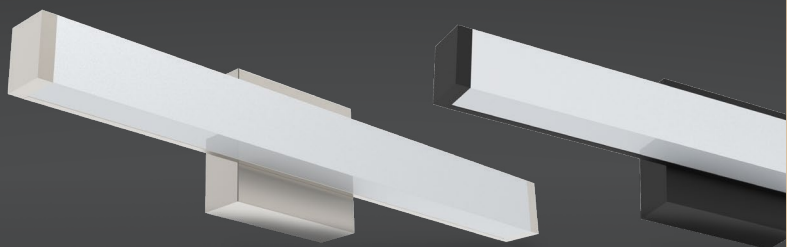


### VIBRANT SPACES

Ideal for environments seeking personality and visual flair, the RGBW model excels in feature walls, entertainment spaces, and modern outdoor areas. Its colour effects and fading modes help shape memorable atmospheres that elevate the experience.

# VNL VANITY LIGHTS

STYLE, FLEXIBILITY, &  
PERFORMANCE



## KEY FEATURES

### Power Selectable

2': 9W / 15W / 19W  
3': 18W / 23W / 30W

### 5CCT Selectability

2700K / 3000K / 3500K / 4000K / 5000K

### 0-10V / ELV / TRIAC Dimmable

120-277V

### Lumen Range

820 - 2900 lm

### Lengths

2' or 3'

### Finishes

Brushed Nickel or Black

### Dual-Mount

Use as a Vanity Light or Wall Sconce,  
mounted vertically or horizontally

### Smooth, Uniform Illumination

Square ends



## UNIQUE FLEXIBILITY

Not only is this series a popular choice for traditional restroom and vanity settings, but thanks to its dual-mount capabilities, it serves as a stylish solution for hallways, living spaces, rec rooms, and more!



DAMP  
LOCATION



# SSM

## SLIM SURFACE MOUNTS



### KEY FEATURES

#### Power

12W, 15W, 18W, 24W

#### 5CCT Selectable

2700K / 3000K / 3500K / 4000K / 5000K

#### ELV / TRIAC Dimmable

120V Driver

#### Lumen Range

1000 - 2150 lm

#### Sizes

5", 7", 9", 12"

#### Trims Available

Brushed Nickel or Black

#### Quick-Snap Mount Design

#### Low-Profile Design

#### Edge-Lit Optics

deliver smooth uniform illumination

#### Compatible with 3" and 4" Junction Boxes



### DAMP LOCATION

P44-rated, our Slim Surface Mounts are designed for both dry and moisture-prone spaces, including areas surrounding shower enclosures, sinks, and bathtubs. Their sleek, low-profile design delivers safe, uniform lighting wherever dependable performance is required.



# SOLEN

## SLIM RECESSED DOWNLIGHTS



### KEY FEATURES

#### Power

9W or 12W

#### 5CCT Selectable

2700K / 3000K / 3500K / 4000K / 5000K

#### TRIAC / ELV Dimming

120V Driver

#### Lumen Range

616 - 999 lm

#### Sizes

4" or 6"

#### White Trim Standard

Black or Brushed Nickel sold separately

#### Hinged Driver Door

for quick installation and access

#### Pre-Installed Lever Connectors

for quick wiring

#### 4' and 10' Extension Cables Available

sold separately

#### Rough-in Plate Mounting Kit

sold separately



### COMFORTABLE LIVING

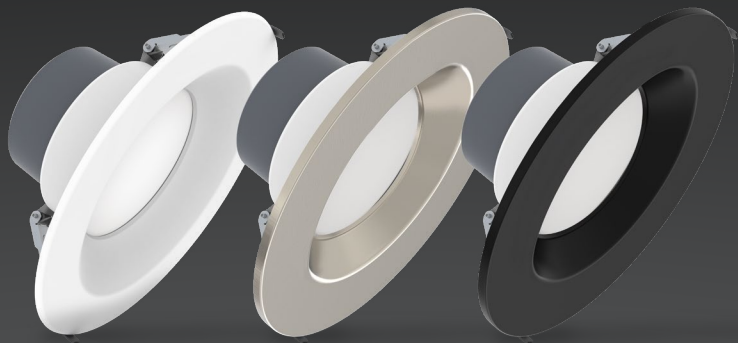
With a sleek, low-profile design, Solen Slim Recessed Downlights blend seamlessly into residential spaces like kitchens, living rooms, and hallways. Selectable CCT and smooth dimming allow homeowners to easily create the right ambiance in any room.





# CDL03

## COMMERCIAL DOWNLIGHTS



### KEY FEATURES

#### 5 Power Selectable

models ranging from 7W to 35W

#### 5 CCT Selectable

2700K / 3000K / 3500K / 4000K / 5000K

#### 0-10V / ELV / TRIAC Dimmable

120-347V Universal Driver

#### Lumen Range

700 - 4150 lm

#### Sizes

4", 6", 8", 10"

#### White Trim Standard

Black or Brushed Nickel sold separately

#### Integral Driver Eliminates Need for Traditional Multi-Piece Fixture Setup

#### IC Rated

for contact with insulation

#### Air-Tight Rated

to meet building code requirements

#### 26" Flexible Conduit Whip

with knockout quick connector

#### Rough-in Plate Mounting Kit

sold separately



### BLEND SEAMLESSLY

The CDL03 series provides focused yet comfortable illumination for kitchens, living rooms, hallways, lobbies, and more! 5 power and CCT settings per fixture allows for maximum configurability.



# ST STRIPS



## KEY FEATURES

**3 Power Selectable\***  
models ranging from 20W to 100W

**3CCT Selectability**  
3500K / 4000K / 5000K

**120-347V Universal Driver**  
0-10V dimming

**Lumen Range**  
2805 - 15700 lm

**Lengths**  
2', 4', 8'

**Select Models Complete With  
Built-in Motion Sensor**  
product codes ending in -MS02

**Quick Release Buttons to  
Remove Lens from Base**

**Lens Suspended from Base  
with Aircraft Cable**  
allowing for faster installation

\*Excluding 20W 2' model.



## PARKING, GARAGES, & MORE

Ideal for shops, cove lighting, parking garages, and general area lighting. The use of aircraft cables make installation and regular maintenance quicker, easier, and safer than ever before!





# WR2

## WRAPS



### KEY FEATURES

#### Power Selectable

24W / 27W / 30W / 35W

#### 3CCT Selectable

3500K / 4000K / 5000K

#### 120-347V Universal Driver

0-10V dimming

#### Lumens

2823 - 4829 lm

#### Elegant Wraparound Lens

delivers low glare and even illumination with wide throw

#### 2 DIP Switches

for easy selection of CCT & wattage

#### Knockout on Each End for Conduit Wiring

#### 2-Piece Design

with separate light engine and base, connected by aircraft cable, allows for fast and easy installation

#### Surface or Pendant Mount Ready



### ROBUST & PRACTICAL

Delivering even, reliable illumination in garages and shared spaces, reducing shadows and improving safety while offering long-lasting, low-maintenance performance.



# RUNNING MAN SIGNS

COMBOS, EDGE-LIT, &  
SELF-POWERED



## KEY FEATURES: 2-HEAD COMBOS

### Maintenance-Free Battery

Ni-Cd battery\*

Lead Acid battery\*\*



### Push Button Test Switch

pilot LED for AC ON and CHARGE

### Up to 2 Hours Emergency Power Duration

as a standalone unit

### Universal Spider Knockout Pattern and Keyhole Slots

stamped into the cabinet back for easy installation

### 2 Adjustable Lamp Heads

### Multiple Conduit Entry Knockouts\*\*



## VERSATILE APPLICATIONS

Wall, ceiling, or flag mounting options combined with single or double-sided configurations allow these signs to fit any space. A UL-94V-0 flame rating and damp-location suitability ensure safe, versatile performance across virtually any application.



# EMERGENCY LIGHTING

BATTERY UNITS, REMOTE HEADS, & DUAL HEAD



## KEY FEATURES: BATTERY UNITS

**Multiple Conduit Entry Knockouts**

**Universal Spider Knockout Pattern and Keyhole Slots**

stamped into the cabinet back for easy installation

**Push Button Test Switch**

pilot LED for AC ON and CHARGE

**Maintenance-Free Battery**

**Short Circuit and Brown Out Protection**

## KEY FEATURES: REMOTE & DUAL HEADS

**Includes Standard Canopy**

allowing for mounting to electrical Junction Boxes

**Fire Resistant Thermoplastic Housing**

**Maintainence-Free Ni-Cd Battery\***

long-lasting battery and simple installation

**1 or 2 Adjustable Swivel Heads\*\***

**2 Adjustable Lamp Heads\***

**Operates from the Power & Control**

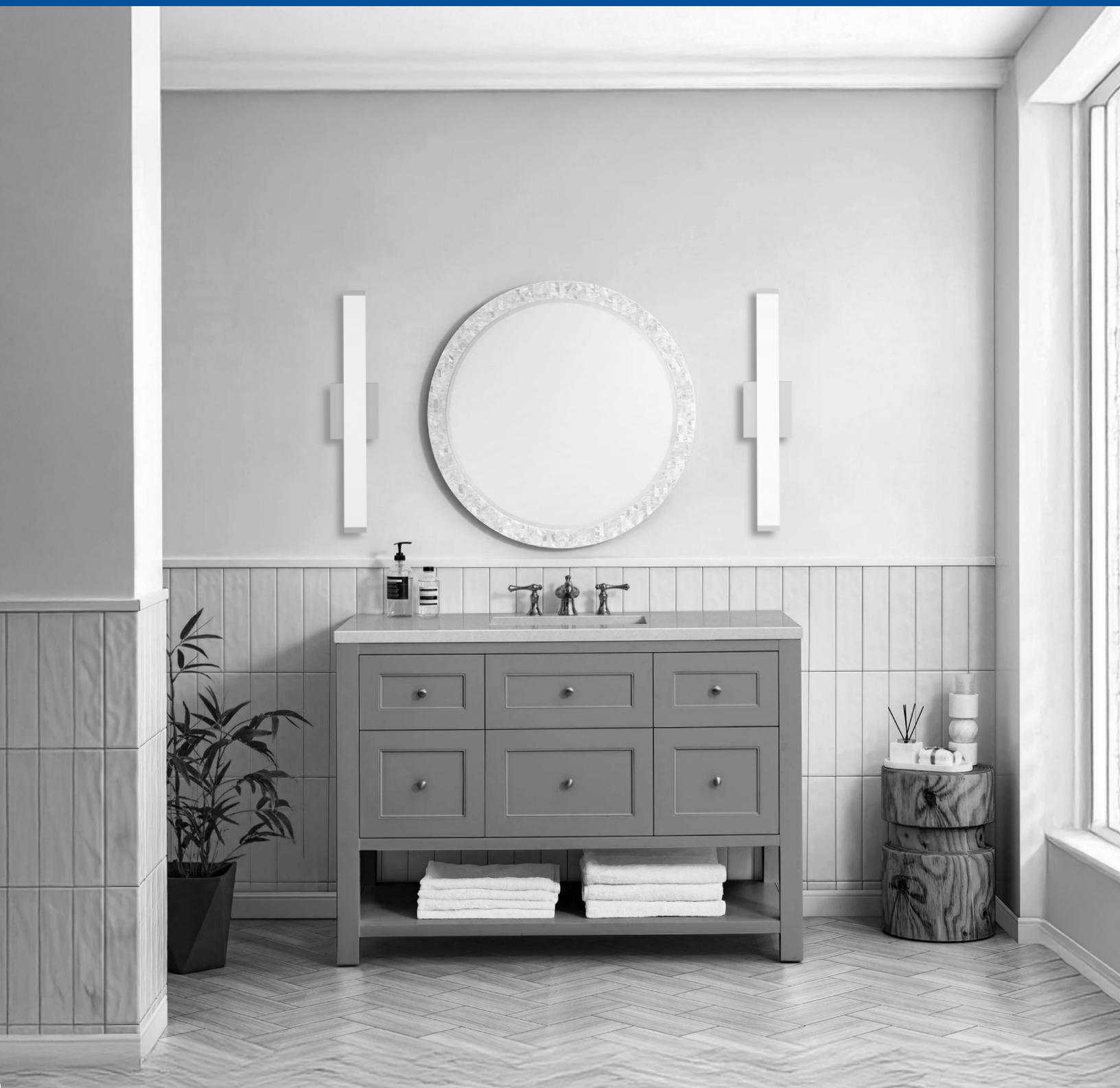
**Circuitry of Emergency Lighting Battery Units and DC Power Back-Up Systems\*\***

\*Dual Head Only    \*\*Remote Heads Only



## COMPLETE ANY PROJECT

Complete your project with our full emergency lighting lineup — from self-powered Running Man signs and Battery Units to Remote Heads and a variety of housing options designed to keep every space safe, visible, and code-compliant.



## BC BRANCH

1140-2375 Fremont St  
Port Coquitlam, BC V3B 0N9  
(778) 730-0448

## AB BRANCH

13-2355 52 Ave SE  
Calgary, AB T2C 4X7  
(403) 907-0212

## ON HEAD OFFICE

8-540 Jamieson Pkwy  
Cambridge, ON N3C 0G5  
(519) 880-9833