

Description:

The Round Ceiling LED Light is designed for patient rooms, offering four lighting modes for comfort and functionality. Ambient Light provides uniform, glare-free illumination, while Exam Light ensures high-intensity brightness for medical tasks. Reading Light delivers soft, focused lighting for patient comfort, and Night Light offers gentle visibility without disturbance. With a sleek, fully enclosed design and advanced LED technology, this fixture ensures safety, energy efficiency, and durability.

Features:

- Hospital grade material and finish
- Glare-free reflectors
- Ambient light
- Exam light
- Reading lights
- Optional night light
- Long lasting LEDs
- Concave lens
- Recessed bezel design
- Optional wet listing



Construction Material:

Housing: 20ga CRS, single piece, seam welded construction

Finish: White urethane powder coat finish – hospital grade material and finish

Lens: IP65 rated fully enclosed, with acrylic lens; 3 mm (0.118") standard thickness

Drivers: High power factor constant current, 0.97 pf @ 120 V (Class 2, Class II)

Light Source: LED mounted to aluminum core linear boards

Specifications:

Voltage: 120 - 277 Volts

Standard Wattage: Ambient: 30.6 W, Exam: 57 W, Reading: 22 W, Total: 109.6 W

Standard Light Output: Ambient: 3149 lms, Exam: 6128 lms, Reading: 2124 lms, Total: 11401 lms

Dimming: 0 - 10 Volts, Standard 5% dimming; contact factory for 1% dimming

Color Quality: Standard 80 CRI, contact factory for 90 CRI

Standard Color Temperature for Reading, Ambient, Exam Lights: 3000K, 3500K, 4000K (contact factory for additional options)

Life of LEDs: L70 >100,000 hours

Warranty: Limited five (5) year warranty

Solar Series

Callisto Multifunction LED Light

Ordering Guide:

L - SCA22 -



For Example: L-SCA22-120-A1E1-L40-A-G-LMD-NL

Solar Callisto 2'x2', 120 V, Ambient (standard lms)/Exam (standard lms), 4000 Kelvin, 80 CRI, Grid Mount, LightMaster with Dimming, Night Light

Ordering Information:

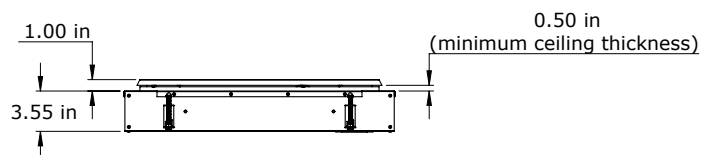
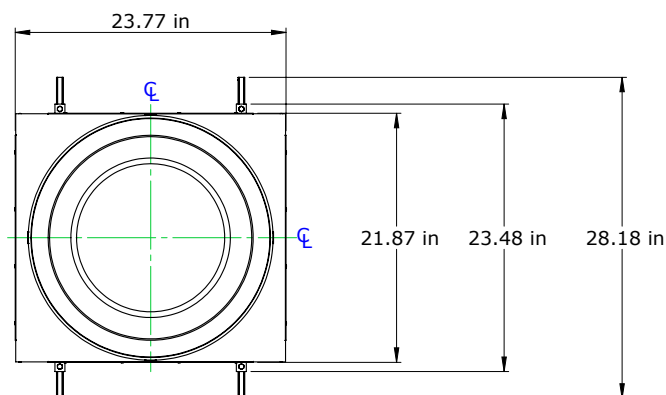
Series	Voltage*	Functions		Color Temp	CRI	Mounting	Controller		Options**				
L-SCA22	120 120 Volts	A100	Ambient (standard lms)	L30	3000K	A	80 CRI	G	Grid Mount	000	No Switch (provided by others)	00	No Options
	277 277 Volts	E100	Exam (standard lms)	L35	3500K	B	90 CRI	F	Flange Mount	LVC	Low Voltage Controller	NL	Night Light (Amber)
	*Contact factory for 347V requirement	A1E1	Ambient (standard lms), Exam (standard lms)	L40	4000K			LVD	Low Voltage Controller with Dimming			WL	Wet Listing
		A1E2	Ambient (standard lms), Exam (high lms)	CXX	Custom Temp			LMS	LightMaster without Dimming			NW	Night Light and Wet Listing
		A1R1	Ambient (standard lms), Reading (standard lms)					LMD	LightMaster with Dimming			**Contact factory for other options	
		A1R2	Ambient (standard lms), Reading (high lms)					DAL	Digital Addressable Lighting Interface Driver (DALI)				
		R1E1	Reading (standard lms), Exam (standard lms)										
		R2E1	Reading (high lms), Exam (standard lms)										
		A200	Ambient (high lms)										
		E200	Exam (high lms)										
		A2E1	Ambient (high lms), Exam (standard lms)										
		A2E2	Ambient (high lms), Exam (high lms)										
		A2R1	Ambient (high lms), Reading (standard lms)										
		A2R2	Ambient (high lms), Reading (high lms)										
		R1E2	Reading (standard lms), Exam (high lms)										
		R2E2	Reading (high lms), Exam (high lms)										
		AL111	Reading (standard lms), Ambient (standard lms), Exam (standard lms)										
		AL112	Reading (standard lms), Ambient (standard lms), Exam (high lms)										
		AL121	Reading (standard lms), Ambient (high lms), Exam (standard lms)										
		AL122	Reading (standard lms), Ambient (high lms), Exam (high lms)										
		AL222	Reading (high lms), Ambient (high lms), Exam (high lms)										
		AL211	Reading (high lms), Ambient (standard lms), Exam (standard lms)										
		AL212	Reading (high lms), Ambient (standard lms), Exam (high lms)										
		AL221	Reading (high lms), Ambient (high lms), Exam (standard lms)										
		CLXXX	Custom Lumens										

NOTES: This product needs a ceiling tile thickness of minimum 1/2" and maximum 1".
A 21" diameter ceiling cutout is required for all mounting types.
For drywall mount, it is recommended to install the fixture before the drywall is placed.

Solar Series

Callisto Multifunction LED Light

Dimensions:



Standard Output:

Ambient: 3149 lms @ 30.6 W

Exam: 6128 lms @ 57 W

Reading: 2124 lms @ 22 W

High Output:

Ambient: 5136 lms @ 50 W

Exam: 14111 lms @ 132.5 W

Reading: 3358 lms @ 34.7 W

NOTE: Lumen outputs are rated at 80 CRI. At 90 CRI, the delivered lumens decrease by approximately 10%.