



Corepro InstantFit (UL Type-A) T8

10T8/COR/48-840/IF16/G/DIM 10/1

CorePro, LED, T8, 10 W, 4000 K, 1600 lm, 70000 hour(s)

The CorePro InstantFit LED lamps provide hassle-free installation with simple lamp-for-lamp replacements. They deliver what we promise, with at least 40% energy savings, flicker-free performance, and the life you would expect. Other lamps claim compatibility but only CorePro InstantFit (UL Type A) has been proven to work with over 200 ballasts and drivers, delivering even light output, with proven energy savings and a long average lifetime. End users will be delighted being under these comfortable and high quality CorePro InstantFit lamps with no visible flicker and optimized optics. Energy managers will enjoy these lamps too as they can count the savings delivered by our lamps. To enjoy more energy savings, the CorePro InstantFit lamps can be paired with the Advance TLED drivers to create a Type C system.

Product data

General Information		Operating and Electrical	
Cap-Base	G13 [Medium Bi-Pin Fluorescent]	Line Frequency	25000-105000 Hz
Nominal lifetime	70,000 hour(s)	Input Frequency	25000-105000 Hz
Switching Cycle	50,000	Power Consumption	10 W
Lighting Technology	LED	Lamp Current (Max)	260 mA
Light Technical		Correlated Color Temperature (Nom)	
Color Code	840 [CCT of 4000K]	4000 K	
Beam Angle (Nom)	240 degree(s)	Luminous Efficacy (rated) (Nom)	
Luminous Flux	1,600 lm	160.00 lm/W	
Color Designation	Cool White (CW)	Color Consistency	
		<6	
		Color rendering index (CRI)	
		82	
		LLMF At End Of Nominal Lifetime (Nom)	
		70 %	

Corepro InstantFit (UL Type-A) T8

Lamp Current (Min)	100 mA
Wattage Equivalent	32 W
Starting Time (Nom)	0.5 s
Warm-up time to 60% light	0.5 s
Power Factor (Fraction)	0.9
Voltage (Nom)	120-277, 347 V
UL Type	UL Type A

Temperature

T-Case Maximum (Nom)	50 °C
----------------------	-------

Controls and Dimming

Dimmable	Yes
----------	-----

Mechanical and Housing

Bulb Finish	Frosted
Bulb Material	Glass
Product Length	1,200 mm
Bulb Shape	T8
Net Weight (Piece)	0.230 kg

Approval and Application

Energy Saving Product	Yes
Approval Marks	RoHS compliance UL certificate DLC compliance
EU RoHS compliant	Yes
Ambient temperature range	-20 °C to 45 °C

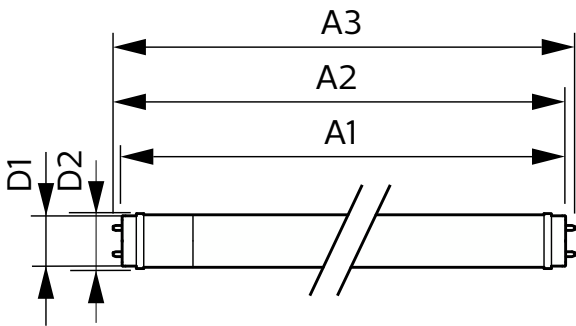
Application Conditions

can it be used in closed luminaires	Yes
-------------------------------------	-----

Product Data

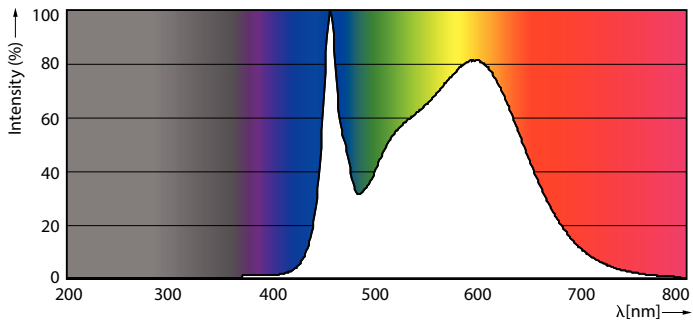
Order product name	10T8/COR/48-840/IF16/G/DIM 10/1
Full product name	10T8/COR/48-840/IF16/G/DIM 10/1
Order code	553230
Material Nr. (12NC)	929001991734
Numerator - Quantity Per Pack	1
EAN/UPC - Product/Case	046677553234
Numerator - Packs per outer box	10
EAN/UPC - Case	50046677553239

Dimensional drawing

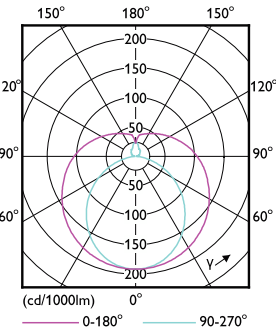


Product	D1	D2	A1	A2	A3
10T8/COR/48-840/IF16/G/DIM 10/1	25.7 mm	28 mm	1,198.1 mm	1,205.2 mm	1,212.3 mm

Photometric data



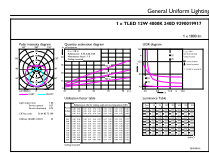
Spectral Power Distribution Colour - 10T8/COR/48-840/IF16/G/DIM 10/1



Light Distribution Diagram - 10T8/COR/48-840/IF16/G/DIM 10/1

Corepro InstantFit (UL Type-A) T8

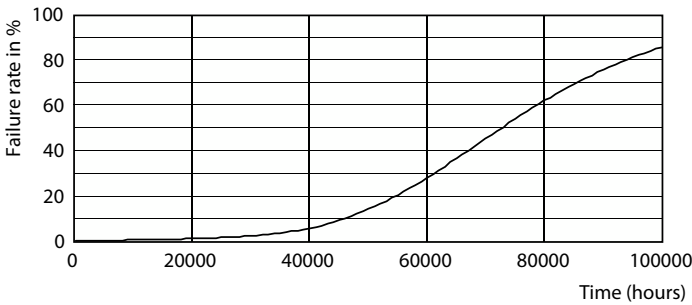
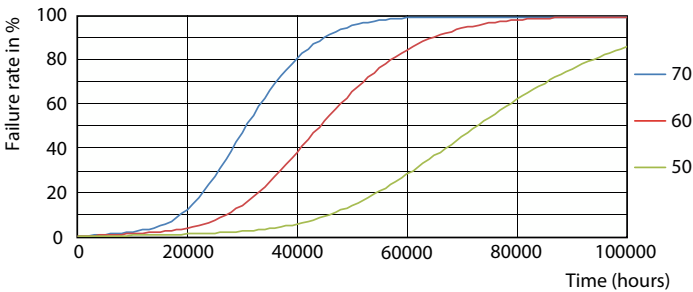
Photometric data



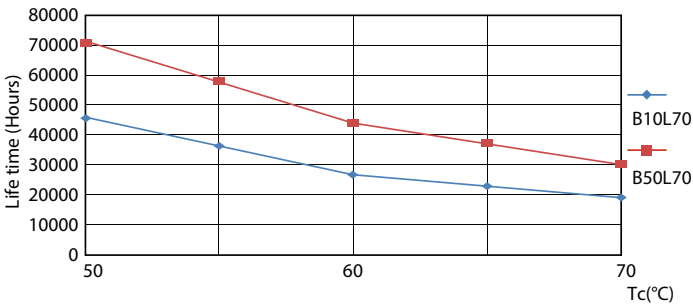
General Photometric Data
Page 10 of 11

General uniform lighting - 10T8/COR/48-840/IF16/G/DIM 10/1

Lifetime

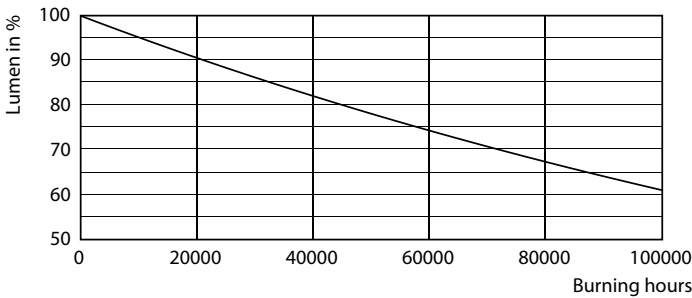


LEDtube 70K 5070 FailureRate-LED



LEDtube 70K 5070 LifetimeVsTc-LED

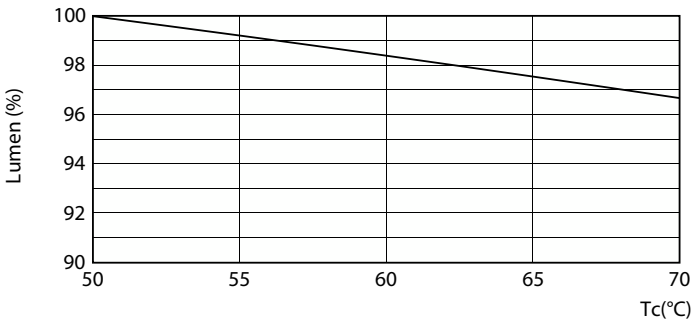
Life Expectancy Diagram



Lumen Maintenance Diagram - 10T8/COR/48-840/IF16/G/DIM 10/1

Corepro InstantFit (UL Type-A) T8

Lifetime



Lumen Maintenance Diagram - 10T8/COR/48-840/IF16/G/DIM 10/1

