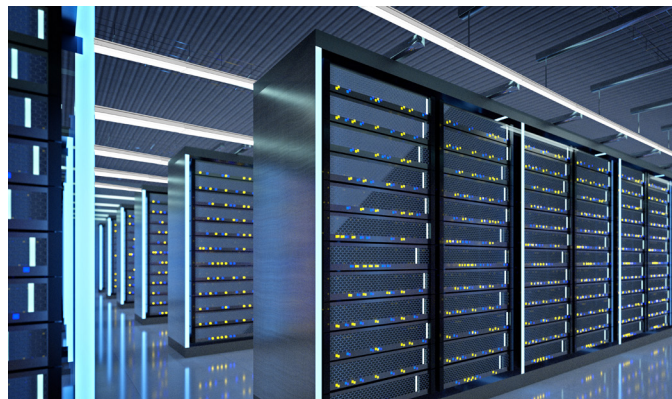


# LCOMD & LCOMF

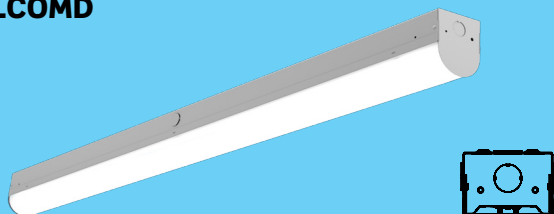
## High-performance LED Strip Luminaires

Experience elevated indoor lighting with our high-performance commercial LED strip luminaires. Engineered for versatility, the LCOMD and LCOMF offer nominal length options of 2', 4', and 8'. Seamlessly integrating into industrial and commercial spaces, these fixtures deliver optimal illumination tailored to meet your needs.

These luminaires feature sleek designs and versatile mounting options, ensuring durability through robust lens choices that effectively shield against dust and debris. They are engineered for superior longevity and energy efficiency, making them the ideal choice for both new installations and efficient retrofits.

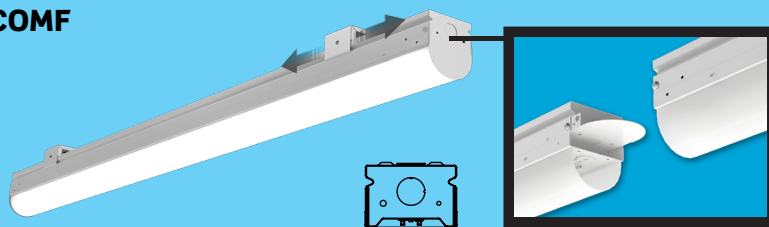


### LCOMD



The **LCOMD** boasts a classic profile with flat sides and riveted end caps, creating a polished aesthetic perfectly suited for commercial and retail applications.

### LCOMF



The **LCOMF** stands out with its grooved housing and optional flexible mounting brackets, offering versatile solutions suitable for applications with varying mounting distances. Its removable end caps also serve as aligners for seamless row mounting support.

Illuminate your space with confidence using the LCOMD and LCOMF luminaires, where performance meets style.

### Features

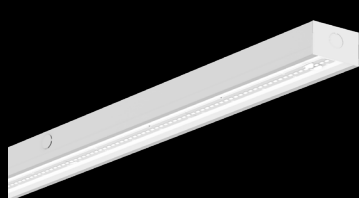
- Snap-in LED tray for toolless access and ease of installation
- Standard 0-10V dimming down to 1%
- DLC listed\*
- Up to 162 lumens per watt
- Wide range of outputs or wide range of lumen packages
- Up to 50 degrees ambient operating temperature on most models

### Options

- Multiple lens options
- Wireguard
- Microwave Occupancy Sensor
- Functional and decorative reflector kits

\* Pending

**Applications:** Covers, Enclosed Parking, Garages, Retail Shelving, Industrial Racks, Utility Areas Data Centers, Fulfillment Centers, Assembly Areas, and more.



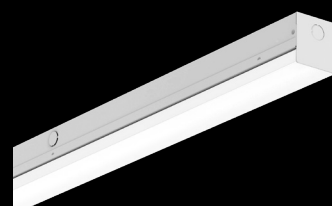
**No Lens  
(Standard)**



**Round Frosted Linear  
Extruded Lens (P77)**



**Square Frosted Lens  
(P95)**



**Shallow Square Frosted Lens  
(P121)**