



**COMPATIBLE WITH SINGLE
CIRCUIT AND 2 CIRCUIT
J-STYLE TRACK**

**BEAM ADJUSTABLE FROM 20
TO 50°**

5 CCT SELECTABLE

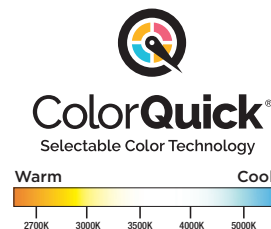
90 CRI HIGH QUALITY LIGHT

SUGGESTED APPLICATIONS

Commercial
Residential
Retail
Hospitality
Accent Lighting

LED TRACK HEAD LIGHTING

BEAM ADJUSTABLE | CCT SELECTABLE | J-STYLE TRACK



SATCO|NUVO's beam adjustable, CCT selectable LED track head fixtures are now compatible with both Single Circuit and 2 Circuit J-Style track systems, expanding their versatility for a wide range of applications. J-Style track, a popular choice in residential and commercial settings, features a streamlined connector design that supports flexible layout configurations. These advanced fixtures offer precise lighting control with a 90-degree adjustable head and a beam spread range from 20 to 50 degrees. The CCT selectable feature provides five color temperature options at installation, while a high 90 CRI ensures crisp, true-to-life white light. Available in matte black or matte white finishes and in 15 or 30 watt models, these fixtures are ideal for museums, galleries, retail spaces, offices, and restaurants.



GENERAL SPECIFICATIONS

Input Voltage: 120V
Operating Frequency: 60Hz
Power Factor: >0.9
Efficacy: 70.00 LPW
CCT Selectable: 2700K/3000K/3500K/4000K/5000K
CRI: 90+
Location Rating: Dry

Ambient Operating Temperature:
 -20°C (-4°F) to +40°C (+104°F)
Track Type: J-Track Compatible
Construction: Aluminum / Steel
Lens Material: Poly methyl methacrylate (PMMA)
Functional Life: 30,000 Hours
Warranty: 3 Year Limited

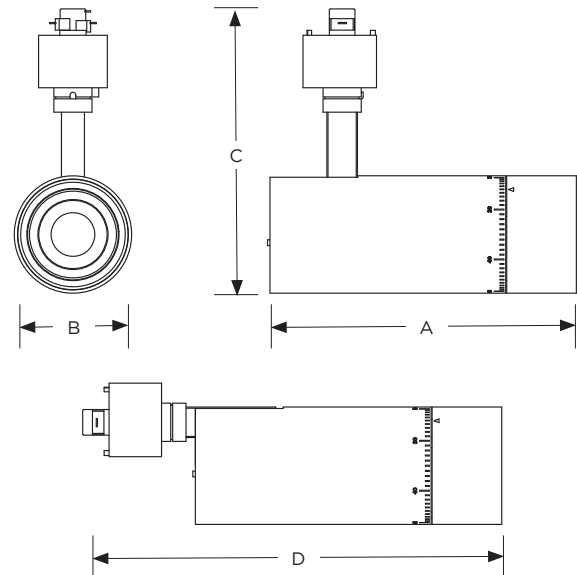
ITEM SPECIFICATIONS / ORDER INFO



Item	Finish	Wattage	Lumens	Input Current	Beam Angle
TH5031	Matte White	15W	1050	0.13A	20-50
TH5032	Matte Black	15W	1050	0.13A	20-50
TH5041	Matte White	30W	2100	0.27A	20-50
TH5042	Matte Black	30W	2100	0.27A	20-50

DIMENSIONS / WEIGHTS

Item	Length (A)	Width (B)	Height (C)	Extends (D)	Weight
TH5031	6.31"	2.43"	5.88"	8.63"	1.40 Lbs.
TH5032	6.31"	2.43"	5.88"	8.63"	1.40 Lbs.
TH5041	6.94"	3.14"	6.63"	9.25"	2.04 Lbs.
TH5042	6.94"	3.14"	6.63"	9.25"	2.04 Lbs.



This device complies with Part 15 of the FCC Rules. Operation is subject to the following two conditions: (1) this device may not cause harmful interference, and (2) this device must accept any interference received, including interference that may cause undesired operation. Fixture may not be compatible with all dimmers.

WARNING: Some products included in this specification sheet may be subject to the warning requirements of California's Proposition 65. Please refer to your product packaging for more information.

Fixture may not be compatible with all dimmers. See satco.com for details.

Meets requirements of ICES-005 issue 5 class B for use in residential applications.

Replacement wattage shown depends on application and fixture. Specifications are subject to change without prior notice.