



The 6ixagon fixture delivers a next level geometric presence with all the benefits acoustic fixtures bring and offers a choice of second colour of acoustic felt to allow for additional stylish options.

6ixagon helps to add some silence as well as aesthetic warmth, texture, and geometric presence to a space combining the best elements of architectural and decorative lighting into a single luminaire. The open top form factor creates an acoustic cavity in the center of the fixture to maximize echo and sound absorption.

RELATED PRODUCT



6ixagon w/second colour AR



Trigon



Foregone



Circlagon

AVAILABLE FINISH OPTIONS

Acoustic



carrot AR-CRT



cornflower AR-CNF



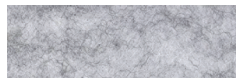
ebony AR-EBY



heather AR-HTH



linen AR-LIN



marble AR-MAR



moss AR-MOS



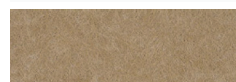
pacific AR-PAC



ruby AR-RBY



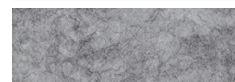
saffron AR-SFN



sand AR-SND



slate AR-SLT



storm AR-STR



ultramarine AR-UMR

FELT FIXTURE SPECIFICATION

Fixture	Width	Felt Height	Outer Sleeve Acoustic Material 1	Inner Sleeve Acoustic Material 2	Mounting
ARF-114					
ARF-114 6ixagon	7W 7"	11H 11"	AR-CRT Carrot	AR-CRT Carrot	ACM Aircraft Cable * Standard length 120"
	11W 11"	15H 15"	AR-CNF Cornflower	AR-CNF Cornflower	STM Stem Mount Standard length 48"
	17W 17"	17H 17"	AR-EBY Ebony	AR-EBY Ebony	CUSM Custom Consult factory Length is field adjustable.
	23W 23"	23H 23"	AR-HTH Heather	AR-HTH Heather	* Remote with escutcheons contact factory for maximum cable lengths
	35W 35"	CUSH Custom Consult factory	AR-LIN Linen	AR-LIN Linen	
	47W 47"		AR-MAR Marble	AR-MAR Marble	
	CUSW Custom Consult factory See page 9 for flat to flat and section length dimensions		AR-MOS Moss	AR-MOS Moss	
			AR-PAC Pacific	AR-PAC Pacific	
			AR-RBY Ruby	AR-RBY Ruby	
			AR-SFN Saffron	AR-SFN Saffron	
			AR-SND Sand	AR-SND Sand	
			AR-SLT Slate	AR-SLT Slate	
			AR-STR Storm	AR-STR Storm	
			AR-UMR Ultramarine	AR-UMR Ultramarine	

LIGHTING SPECIFICATION

Driver Location	Voltage	Power Cable Finish	Stem and/or Canopy Finish	Color Temperature				
<div></div>	<div>UNV</div>	<div></div>	<div></div>	<div></div>				
<div>SCDL</div> Surface Circular Canopy	<div>UNV</div> 120/277 Volts <i>Consult factory for other voltages</i>	<div>WPC</div> White	<div>WCF</div> White	<div>White Sources</div>				
<div>SSDL</div> Surface Circular Side Entry		<div>BPC</div> Black	<div>BCF</div> Black	<div>2700K</div> 2700K				
<div>CUSDL</div> Custom Driver <i>Consult factory for options.</i>			<div>ACF</div> Brushed Aluminum	<div>3000K</div> 3000K				
			<div>RAL</div> Custom <i>RAL North America; Consult factory</i>	<div>3500K</div> 3500K				
			<div>4000K</div> 4000K	<div>3000FS</div> Full Spectrum <i>3000K</i>				
				<div>3500FS</div> Full Spectrum <i>3500K</i>				
				<i>Full spectrum .95 reduced output contact factory</i>				
				<div>2765K</div> Tunable White* <i>2700K - 6500K</i>				
				<div>CUSK</div> Custom CT*				
Color Rendering	Delivered Output							
<div>90CRI</div>	<div></div>							
90 90+ CRI	<div>White Sources Static/Tunable</div>	7"	11"	17"	23"	35"	47"	Continued on Next Page
	<div>Standard</div>	<div>750LM - 7W</div>	<div>1000LM - 10W</div>	<div>1600LM - 16W</div>	<div>2600LM - 26W</div>	<div>4800LM - 48W</div>	<div>7800LM - 785W</div>	
	<div>___LM</div>	Custom Lumen Output*						
	<div>RGB / RGBW Sources</div>	7"	11"	17"	23"	35"	47"	
	<div>Standard</div>	<div>7W</div>	<div>10W</div>	<div>16W</div>	<div>26W</div>	<div>48W</div>	<div>78W</div>	
	<div>___W</div>	Custom Watts Output*						
<div>Consult factory for outputs outside of this range.</div> <div>Total lumen output up to 20,000 lm delivered based on size.</div> <div>Maximum Output varies by size</div>								

LIGHTING SPECIFICATION continued

Dimming Driver

White Sources Static

- S010V10

Standard 0-10V, 10%
- S010V01

Standard 0-10V, 1%,
(dim to off)
- EDALI01

DALI control, 0.1%
- LECO01

Lutron Ecosystem, 1% SOFTB,
(Soft-on, Fade-to-Black)

RGB / RGBW Sources

- EDMX01

DMX, 0.1%
- CUSDD

Other Driver Options
*Consult factory for availability of other driver
options (including POE and Camera Safe)*

White Sources Tunable

- TW010V

Tunable White 2-Channel 0-10V
- TWDALI

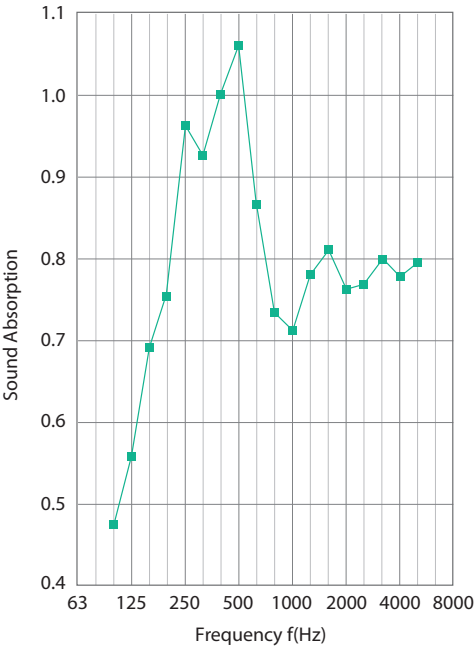
Tunable White DALI control
- LECOTW

Lutron Ecosystem, 1%,
Tunable White – T series

NOISE REDUCTION COEFFICIENT

- The test was carried out by external laboratory (SGS) assessed as competent.
- TEST METHOD: EN ISO 354:2003 Acoustic Measurement of sound absorption in a reverberation room. Tested with back airspace of 200mm (7.87”).
- TEST RESULT: Noise Reduction Coefficient: NRC = 0.85

f Hz	α_s
50	/
63	/
80	/
100	0.47
125	0.56
160	0.69
200	0.75
250	0.96
315	0.92
400	1.00
500	1.06
630	0.87
800	0.73
1000	0.71
1250	0.78
1600	0.81
2000	0.76
2500	0.77
3150	0.80
4000	0.78
5000	0.79
NRC	0.85



WRITTEN SPECIFICATIONS

LED System

- LED Circuitry is applied to minimum 0.0625" thick aluminum modules for excellent heat management. Modules are removeable for maintenance and are 90% recyclable.
- LEDs are 90+CRI, 3 SDCM.
- 36" x 8" fixture performance at 3000K 90CRI, 6896lms, 61.44 Watts, 112 LPW Delivered
- Full Spectrum, efficiency is 88 lm/W; CRI is 96+ with all R1-R15 values at 90 or higher and Rf (fidelity) of 95, Rg (gamut) of 105.
- Tunable White, efficiency is 90 lm/W; Delivered lumens is for both channels simultaneously at full output (maximum per individual channel is approximately 50% of total delivered lumens).
- RGBW lumen outputs per channel as follows:
 White only: 85 lm/W @ 25% of W Red only: 24 lm/W @ 25% of W
 Green only: 70 lm/W @ 25% of W Blue only: 13 lm/W @ 25% of W
 All four channels max: 56 lm/W @ 100% of W (approx 9000K CCT)

Construction

- Acoustic felt: Acoustic baffle is made from 100% PET (polyethylene terephthalate) fiber, which is a rigid, dimensionally strong, and stable material that is water and moisture resistant. Baffle is completely recyclable and contains a minimum of 30% post-consumer recycled content. Thickness of base material, 9mm.
- Independent certifications: A flame spread index (FSI) and smoke-development index (SDI) test was carried out by external laboratory (SGS) based on ASTM E84-2020 Standard Test Method for Surface Burning Characteristics of Building Materials. Test Results - FSI-15; SDI 80; ATSM E84 Class A

- Metal construction to be aluminum minimum 0.0625" thickness. Fasteners are to be stainless steel.
- Cable grippers are nickel plated solid brass and stainless steel. Cables are 1/16" stainless steel.
- Canopies and driver housings are minimum 0.0625" aluminum.
- Barbican's Drum fixtures comes standard with the shade and light engine fully enclosed to protect from ingress of dirt, dust and other site conditions.

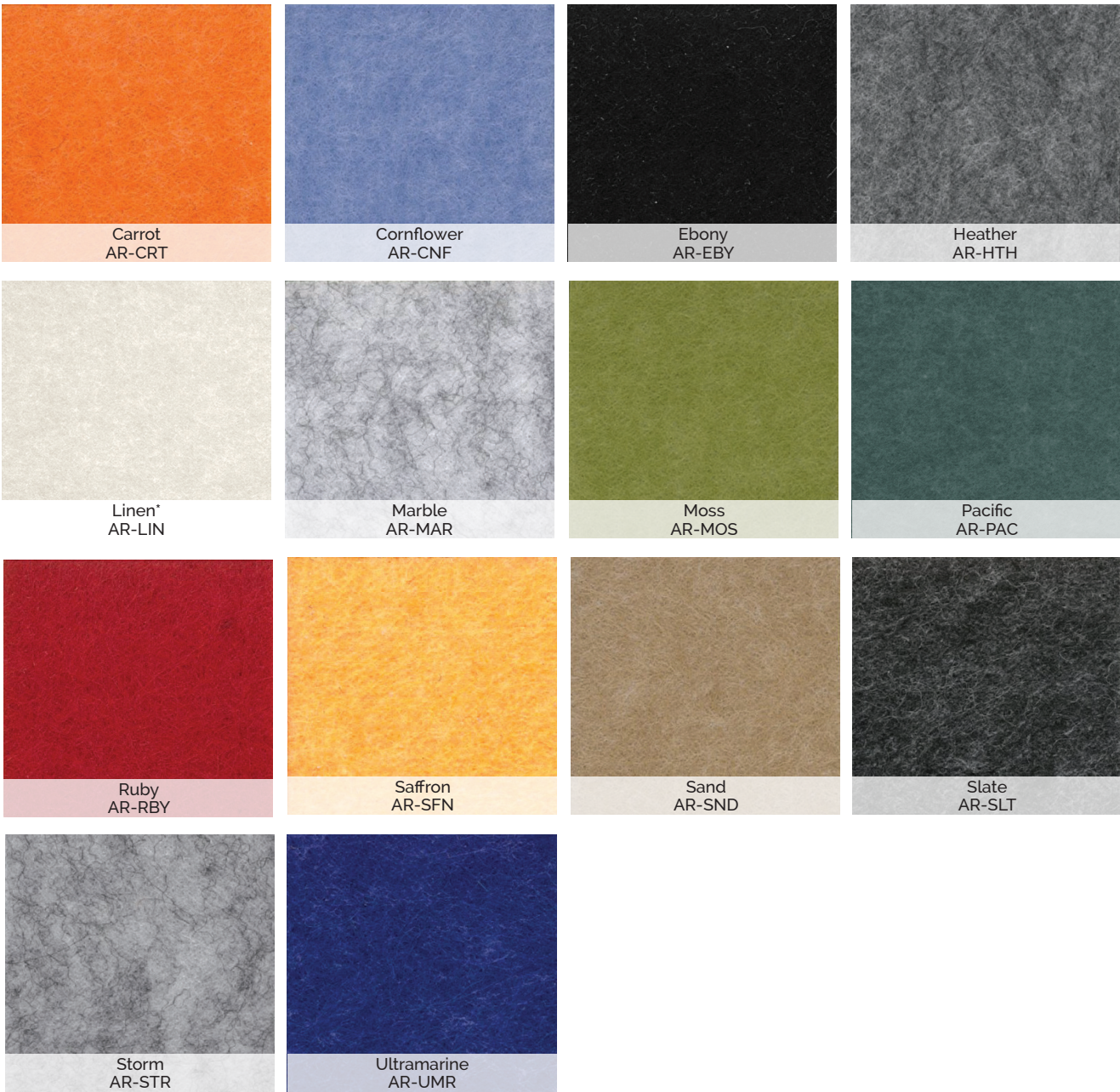
Mounting

- Power cables are low voltage from the canopy drivers.
- Drivers: All drivers are mounted in the canopy. Standard drivers include 0-10V 10% dimming 120/277V with Power Factor of >.9. Barbican works with most Control and Driver manufacturers including POE and can easily modify the driver housings for special control gear. Fixtures over 96W may require more than one driver per fixture.
- Emergency fixtures are supplied with leads and KO for UL924 relays (by others). Battery back up will usually only drive one or two of the cores in larger fixtures to maintain the 90 minute requirement. Maximum distance driver to fixture 15 feet.
- Labels: ETL US and Canada, CE Europe and Middle East (Dry, Damp indoor use only)
- Finish: Polyester Powder Coated standard, Hand Brushed Aluminum
- Lumen Maintenance: Reported L90 > 10,000hrs, Calculated > 60,000hrs (TM-21)
- Warranty: 5 years limited at 25 Celsius. Contact Barbican for additional information.

LABELS



ACOUSTIC FELT Colour Samples



*LINEN is available for Acoustic Shapes, Sheets and Panels, but only select Lighting Fixtures.
Please consult with factory for availability.

SPECIFICATION MODIFIERS

Specification Modifiers

Barbican is well known for modifications to meet special requirements. We would be pleased to discuss any ideas you have to make our fixtures meet your needs. Some common modifiers would be; Size (diameter/height), Materials/Finishes, Mounting, Colour Temperature, Delivered Lumens, Driver Location or Dimming Drivers.

Please consult our Sales Department with your requirements.

Digitally Printed AR is available as a custom option.

Printed acoustic felt may include Printed Patterns, Natural Wood grain/stain options, Natural Stone, Barbican's Artisan Collection, and a variety of Printed Textures. Please take note that only the flat surface can be printed, **not the Acoustic Felt edge**. Some options may not be suitable for certain fixtures.

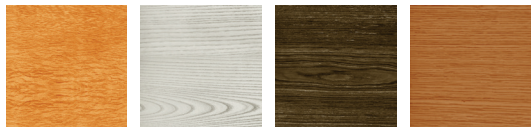
Please consult our Sales Department with your requirements.

You can view and download swatch flyers on our website at Resources > Reference.

Printed Patterns (56)



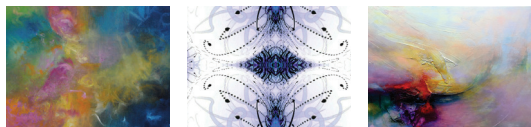
Natural Wood - for AR (36 - 6 grain, 6 stain combinations)



Natural Stone (18)



Artisan Collection (98 - 3 Artists)



Printed Textures (8 Categories, 98)



Buckhorn w/Digital Printed Woodgrain



Warmer tone prints such as Natural Wood are printed on 'Sand' Acoustic Felt (AR-SND).



Patterns, Art Prints and more neutral images are printed on Linen Acoustic Felt (AR-LIN).

APPLICATIONS

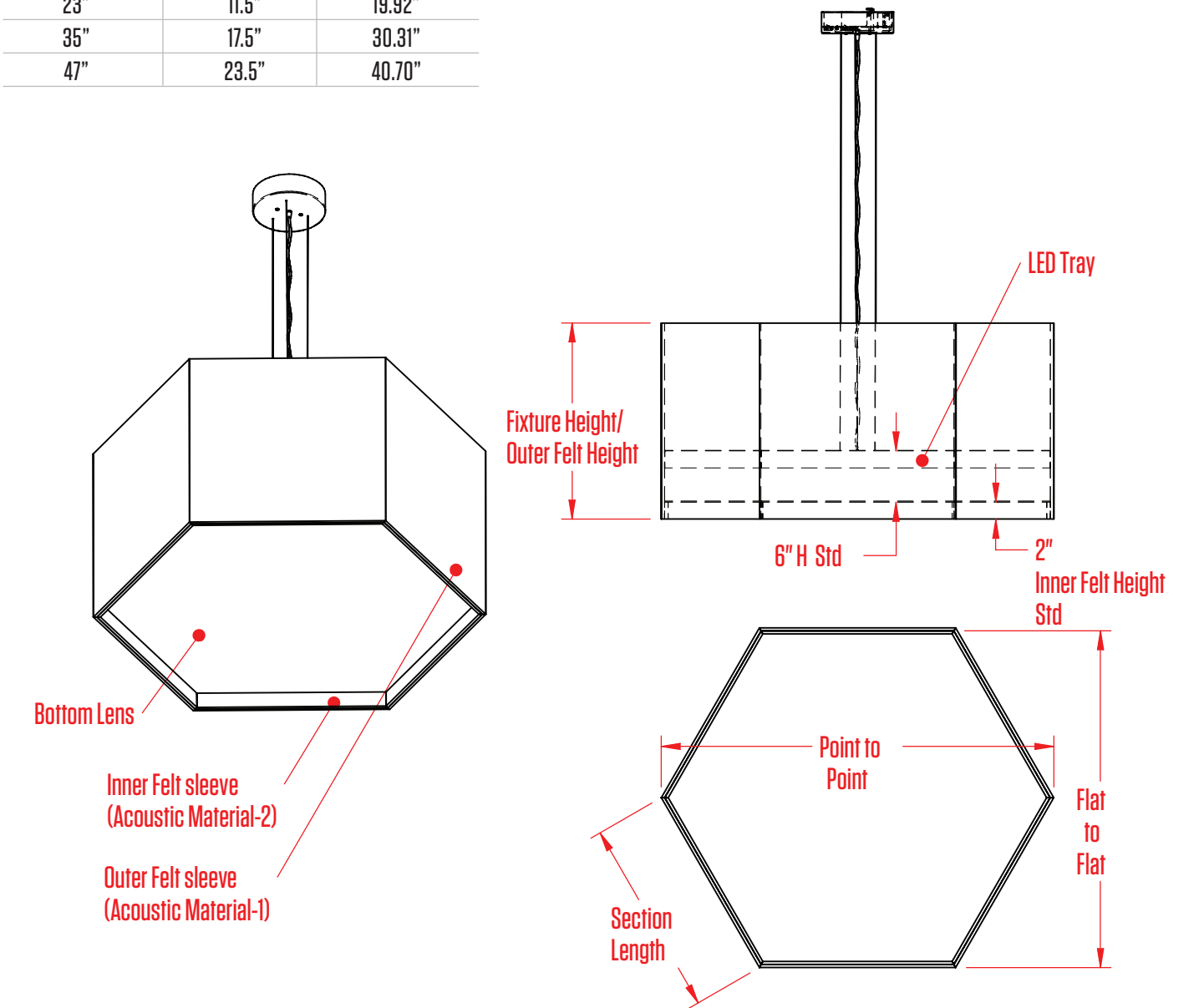


APPLICATIONS



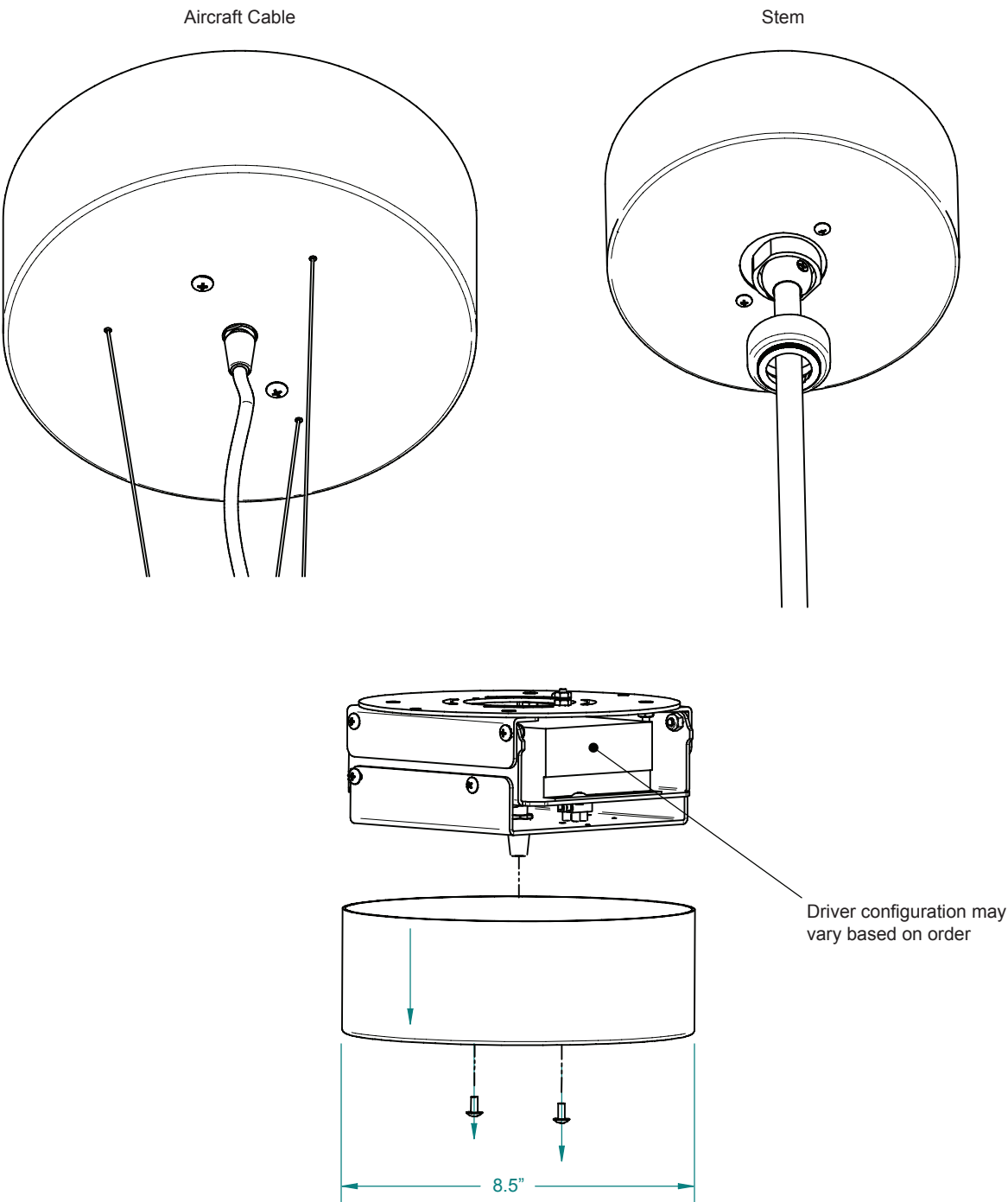
LINE DRAWINGS

Point to Point Width	Section Length	Flat to Flat Width
7"	3.5"	6.06"
11"	5.5"	9.53"
17"	8.5"	14.72"
23"	11.5"	19.92"
35"	17.5"	30.31"
47"	23.5"	40.70"



SPECIFICATION DETAILS (cont.)

**Surface Circular Canopy
(SCDL)**



SPECIFICATION DETAILS (cont.)

**Surface Circular Side Entry Canopy
(SSDL)**

