



PRODUCT
CODE(S):

NOTES:

TYPE:

Interactive PDF. Click to type.

FUSION Flood Lights

Power and 3CCT Selectable | 120-347V

Easily configure beam angle, power, photocell, and CCT using field accessible integrated switches!
Illuminate large outdoor areas including parking lots, building exteriors, sports fields, and more!

Power Selectable

3 power settings per fixture

3CCT Selectable

3000K / 4000K / 5000K

120-347V Universal Driver

0-10V dimming

Mounting Sold Separately

See page 6 for complete mounting options. Mount required for use

3 Distribution Types per Luminaire

5H5V / 6H6V / 7H6V

Built-in Photocell

switch off to disable

IK07 and IP65 Rated



80W



150W



300W

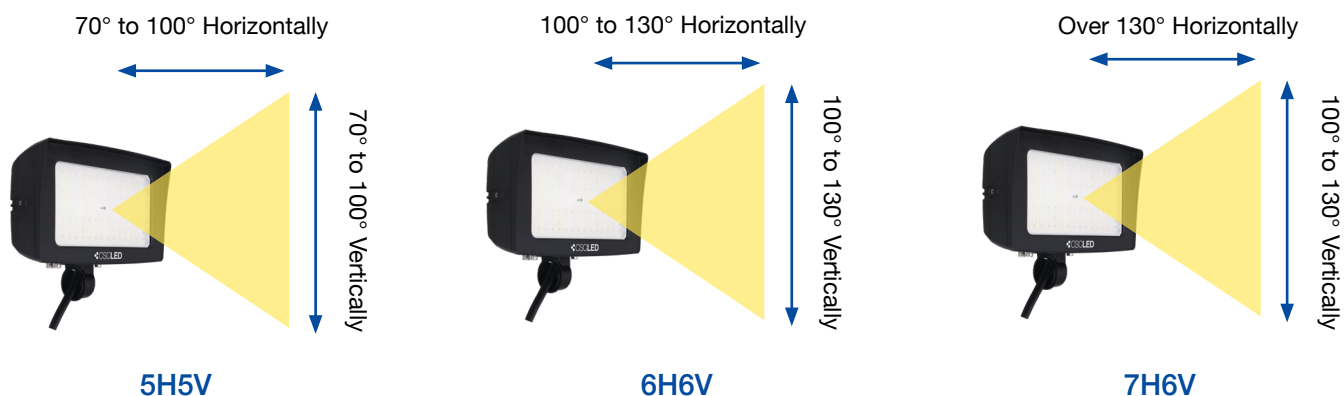
All models are available in Bronze & Black

Pictured: Bronze

Included in Box:
Optic Adjustment Tool



DISTRIBUTION TYPES (ALL WATTAGES)



NEMA BEAM SPREAD CLASSIFICATION

The NEMA distribution identifies the approximate horizontal and vertical beam spread, to 10% of the maximum beam intensity.

Example: 60 Horizontal x 50 Vertical = NEMA 4X4 or 4H4V

NEMA Beam Spread Classification		
Beam Spread Degrees	NEMA Type	Beam Description
10° - 18°	1	very narrow
18° - 29°	2	narrow
29° - 46°	3	medium narrow
46° - 70°	4	medium
70° - 100°	5	medium wide
100° - 130°	6	wide
130° +	7	very wide

SELECTION SWITCHES AND PHOTOCELL OPTIONS



Beam Angle Selector



Power, CCT, and Photocell
Selector Switches



Blanking Plate with
1/2" Knockout

LIGHT SPECIFICATIONS AND ELECTRICAL



PRODUCT CODE	WATTS	CCT	LUMENS	EFFICACY	VOLTAGE	CRI	FACTORY SETTINGS	MAX CURRENT	EPA
FLF-80W-3P-3CCT-3B-UD-BZ FLF-80W-3P-3CCT-3B-UD-BK	40W	3000K	7060 lm	176 lm/W	120-347V	82	80W 4000K 7H6V	0.8A	0.48ft ²
		4000K	7407 lm	185 lm/W					
		5000K	7280 lm	182 lm/W					
	60W	3000K	8860 lm	148 lm/W					
		4000K	9377 lm	156 lm/W					
		5000K	9096 lm	152 lm/W					
	80W	3000K	10694 lm	134 lm/W					
		4000K	11243 lm	141 lm/W					
		5000K	10835 lm	135 lm/W					
FLF-150W-3P-3CCT-3B-UD-BZ FLF-150W-3P-3CCT-3B-UD-BK	100W	3000K	15167 lm	152 lm/W	120-347V	80	150W 4000K 7H6V	1.5A	0.78ft ²
		4000K	15830 lm	158 lm/W					
		5000K	15438 lm	154 lm/W					
	125W	3000K	17951 lm	144 lm/W					
		4000K	19313 lm	155 lm/W					
		5000K	18702 lm	150 lm/W					
	150W	3000K	21141 lm	141 lm/W					
		4000K	21936 lm	146 lm/W					
		5000K	21061 lm	140 lm/W					
FLF-300W-3P-3CCT-3B-UD-BZ FLF-300W-3P-3CCT-3B-UD-BK	200W	3000K	29696 lm	148 lm/W	120-347V	80	300W 4000K 7H6V	3.0A	1.27ft ²
		4000K	31741 lm	159 lm/W					
		5000K	31461 lm	157 lm/W					
	250W	3000K	35587 lm	142 lm/W					
		4000K	38136 lm	153 lm/W					
		5000K	36884 lm	148 lm/W					
	300W	3000K	41725 lm	139 lm/W					
		4000K	45074 lm	150 lm/W					
		5000K	46413 lm	155 lm/W					

DLC INFORMATION Where XX represents finish colour (Bronze or Black)

PRODUCT CODE	PRIMARY USE	DLC ID	CLASSIFICATION
FLF-80W-3P-3CCT-3B-UD-XX	Architectural Flood and Spot Luminaires	S-32H9N1	Premium
FLF-150W-3P-3CCT-3B-UD-XX	Architectural Flood and Spot Luminaires	S-FWNWM8	Premium
FLF-300W-3P-3CCT-3B-UD-XX	Architectural Flood and Spot Luminaires	S-FB5YXZ	Premium

SPECIFICATIONS & ELECTRICAL

Surge Protection (80W model)	6kV
Surge Protection (150W & 300W models)	10kV
Auxiliary Output	12V
Power Factor	≥0.9
THD	≤20%
Operating Temp	-40°C to 50°C
Operating Temp with Sensor	-30°C to 45°C
Distribution	5H5V/6H6V/7H6V
Distribution Angles	See page 2
Dimmable	0-10V
L70 Life	>50,000 hrs
Warranty	10-year

APPROVALS & RATINGS

cUL	E482965
IP Rating	IP65
IK Rating	IK07

CONSTRUCTION

Housing	Die-Cast Aluminum
Lens	Polycarbonate
Finish	Powder Coated
Finish Colour	Bronze or Black
Cord Whip*	23.6"

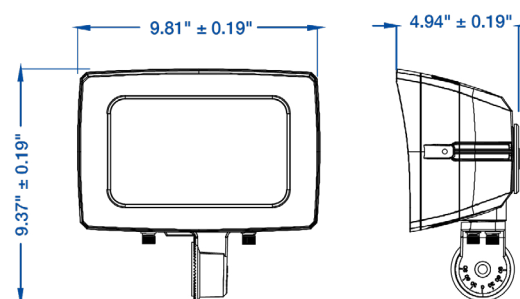
*Measured outside of luminaire

MEASUREMENTS (IN) & WEIGHTS (LBS)

Where XX represents finish colour (Bronze or Black)

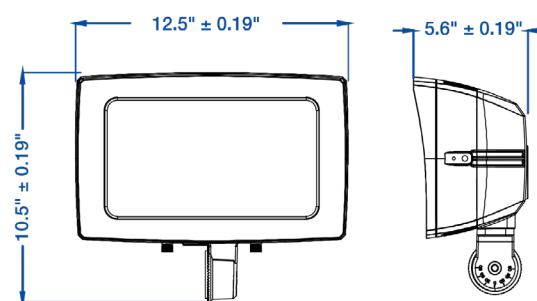
FLF-80W-3P-3CCT-3B-UD-XX

Product Meas.	9.8" x 9.4" x 4.9"
Fixture Weight	4.69 lbs
Carton Qty	1
Carton G.W.	5.35 lbs
Carton Meas.	12.6" x 12" x 7.1"



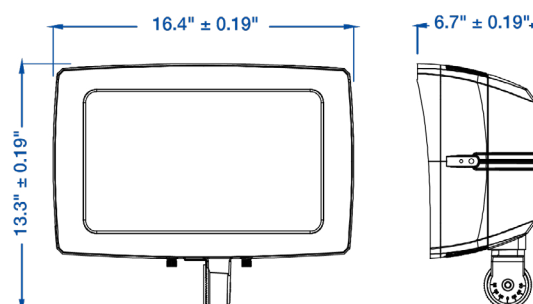
FLF-150W-3P-3CCT-3B-UD-XX

Product Meas.	12.5" x 10.5" x 5.6"
Fixture Weight	9.64 lbs
Carton Qty	1
Carton G.W.	11.18 lbs
Carton Meas.	15.4" x 13.8" x 8.2"



FLF-300W-3P-3CCT-3B-UD-XX

Product Meas.	16.4" x 13.3" x 6.7"
Fixture Weight	16.9 lbs
Carton Qty	1
Carton G.W.	18.7 lbs
Carton Meas.	19.3" x 16.5" x 9.4"



ACCESSORIES (Sold Separately)

		SHADED CELLS INDICATE COMPATIBILITY					
		BRONZE			BLACK		
PRODUCT NUMBER	PRODUCT NAME	80W	150W	300W	80W	150W	300W
FLF-YM01-XS-BZ	Yoke Mount, Extra Small, Bronze						
FLF-YM01-SM-BZ	Yoke Mount, Small, Bronze						
FLF-YM01-LG-BZ	Yoke Mount, Large, Bronze						
FLF-YM01-XS-BK	Yoke Mount, Extra Small, Black						
FLF-YM01-SM-BK	Yoke Mount, Small, Black						
FLF-YM01-LG-BK	Yoke Mount, Large, Black						
FLF-KN01-XS-BZ	Knuckle Mount, Extra Small, Bronze						
FLF-KN01-XS-BK	Knuckle Mount, Extra Small, Black						
FL-SF01-BZ	Slip Fitter, Bronze						
FL-SF01-BK	Slip Fitter, Black						
FL-PM01-BZ	Pole Mount, Bronze						
FL-PM01-BK	Pole Mount, Black						
FL-MM01-BZ	Multi Mount, Bronze						
FL-MM01-BK	Multi Mount, Black						
FL-FM01-BZ	Fixed Mount, Bronze						
FL-FM01-BK	Fixed Mount, Black						
FL-TR01-BZ	Trunnion Mount, Bronze						
FL-TR01-BK	Trunnion Mount, Black						
JL-205LV*	Photocell, 120-277V						
JL-207E*	Photocell, 347V						
JL-200	Photocell Receptacle, 0-480V						
JL-208*	Shorting Cap						

*Requires JL-200

BULLHORNS & TENON ADAPTORS (Sold Separately)

Pictured in Bronze

For more information on Pole Accessories, see series product sheet

- Slip Fitter is sold separately and is required for use
- Available in Bronze and Black



Inline 2-head



Inline 3-head



Round
3", 4", or 5" to 2 3/8"



Square
4" or 5" to 2 3/8"

MOUNTING (SOLD SEPARATELY & REQUIRED)

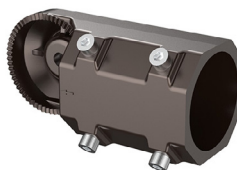
Mounts shown below are Bronze. Each mount is available in Bronze and Black. Full part numbers are listed in the table on page 5



Trunnion Mount



Fixed Mount



Slip Fitter



Pole Mount



Multi Mount



Yoke Mount



Knuckle Mount